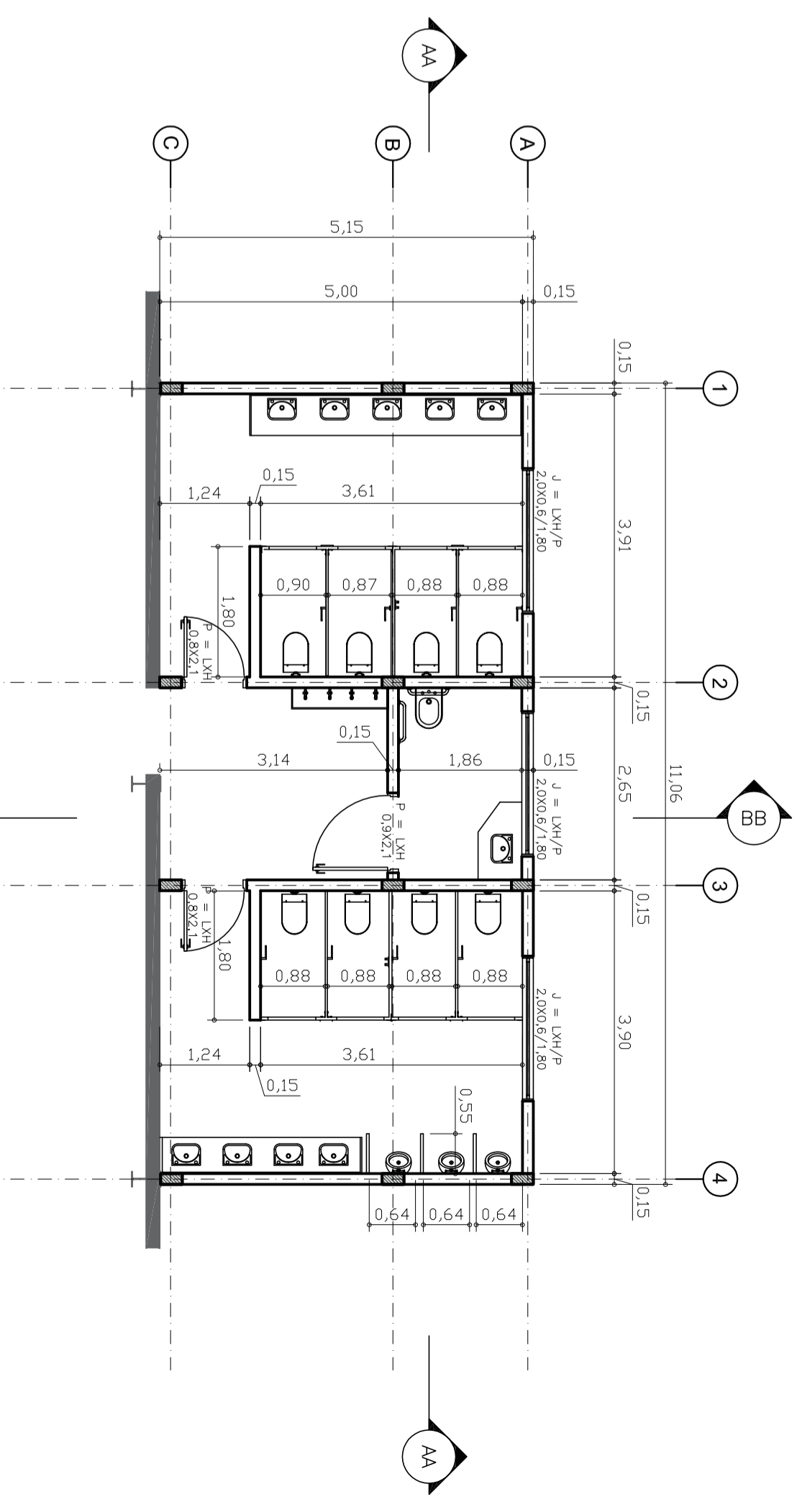
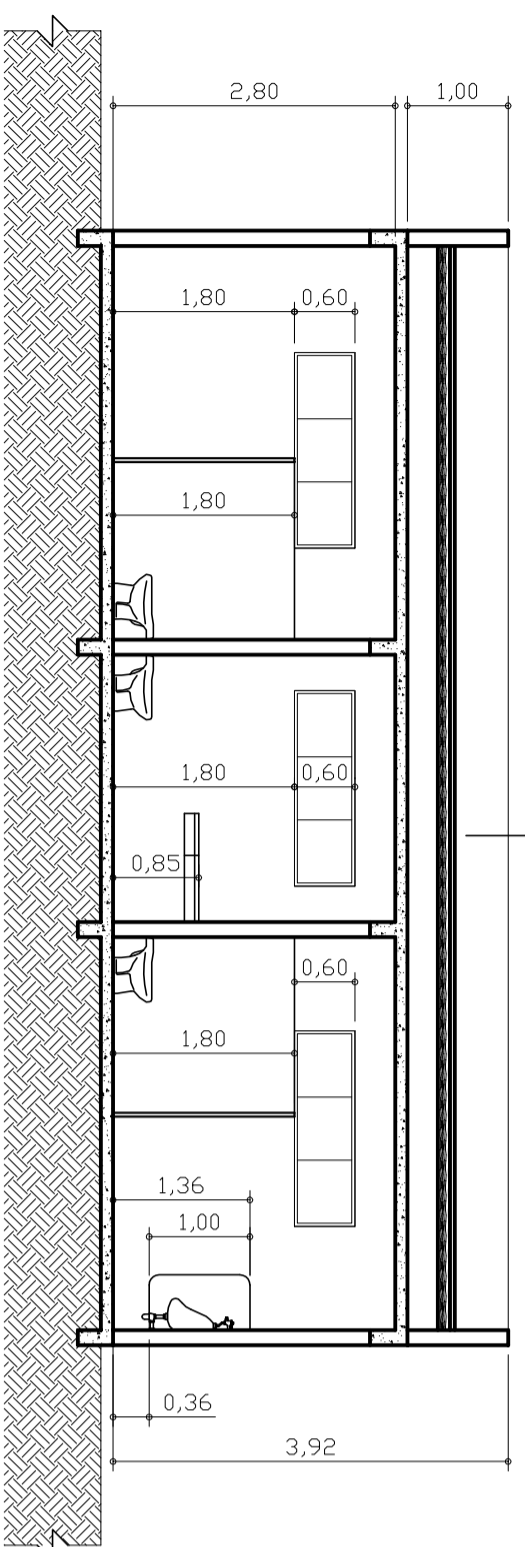


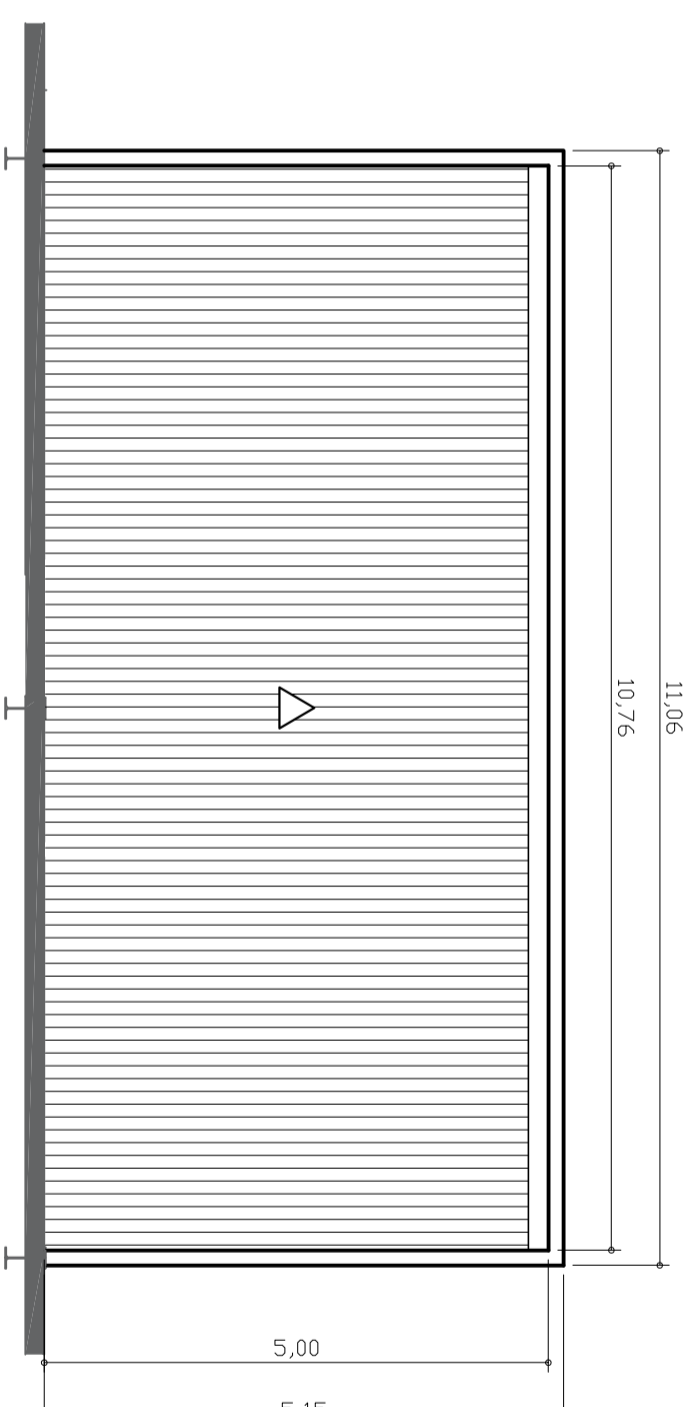
8 PLANTA DE LAJE
1:75



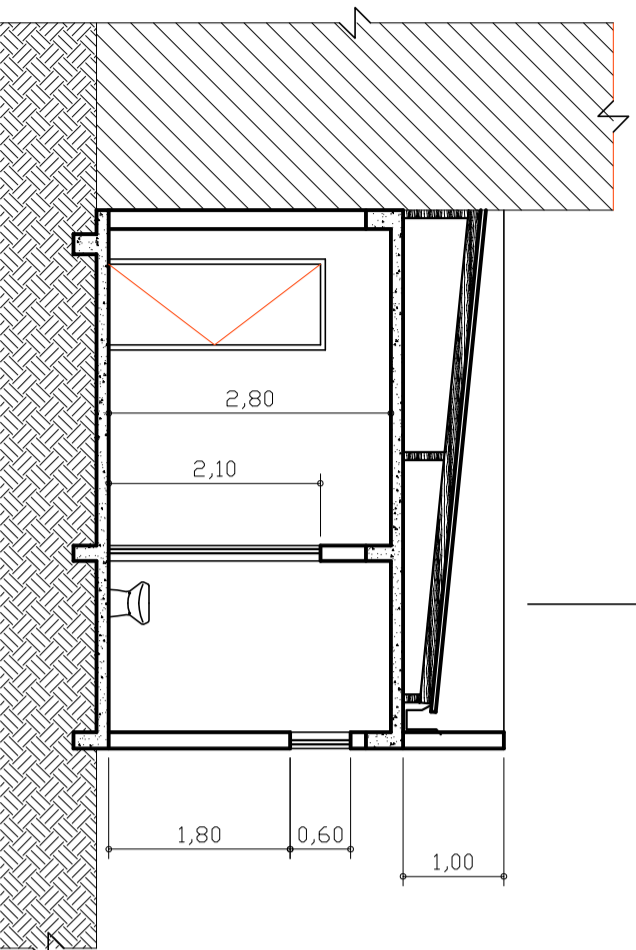
9 PLANTA BAIXA
1:75



10 CORTE AA
1:75



12 PLANTA BAIXA
1:75



11 CORTE BB
1:75

PROJETO DE AMPLIAÇÃO DE CORPO DE SANITÁRIO NO GINÁSIO MUNICIPAL PROF. LEVINDO FURQUIN LAMBERT

PREFEITURA MUNICIPAL DE CAMBUÍ - MG

GINÁSIO MUNICIPAL PROF. LEVINDO FURQUIN LAMBERT

R.T.: LEONARDO MESQUITA REIS BELICÓ - ARQUITETO E URBANISTA
CAU A35098-2

ESCALAS: INDICADAS

FOLHA 02 DE 02