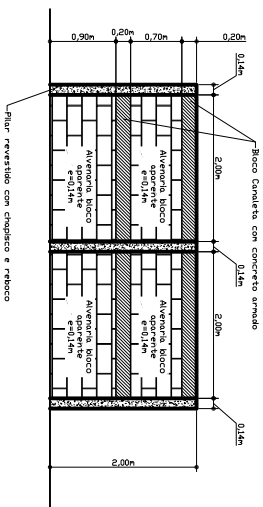
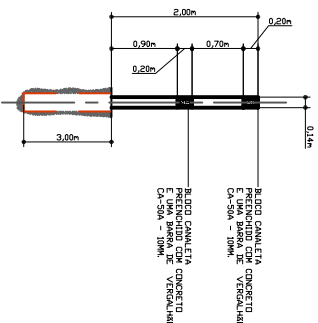


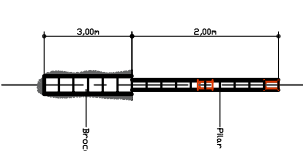
1 PLANTA MURS



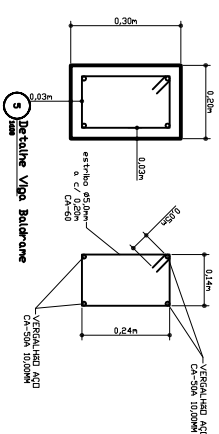
2 DETALHE MURO DE FECHAMENTO



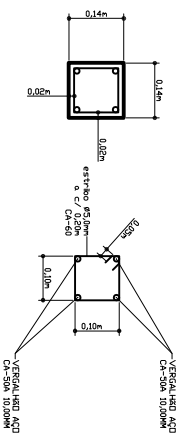
3 CORTE ESQUEMATICO 1 - MURO DE FECHAMENTO



4 CORTE ESQUEMATICO 2 - MURO DE FECHAMENTO



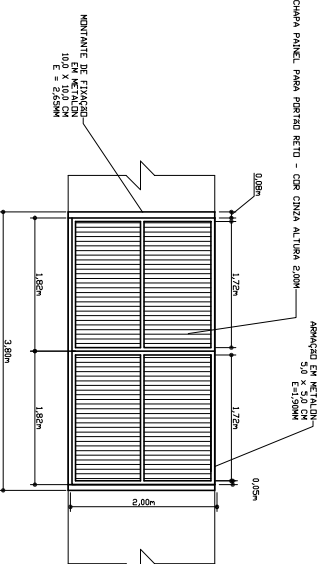
5 DETALHE VIGAS BALDAPONE



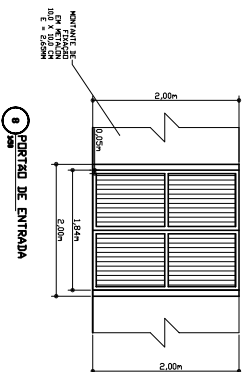
6 DETALHE PILAR TIPO



8 DETALHE DAS BRICKS



7 PORTAZO LATERAL



8 PORTAZO DE ENTRADA

PROJETO ARQUITETONICO

PROJETO DE MURO PARA FECHAMENTO DA UNIDADE BASICA DE SAUDE DO BAIRRO DO CONGINHAL

AUTOR DO PROJETO:
Gregory Veits de Carvalho Barbeles - Engenheiro

Folha

2/2