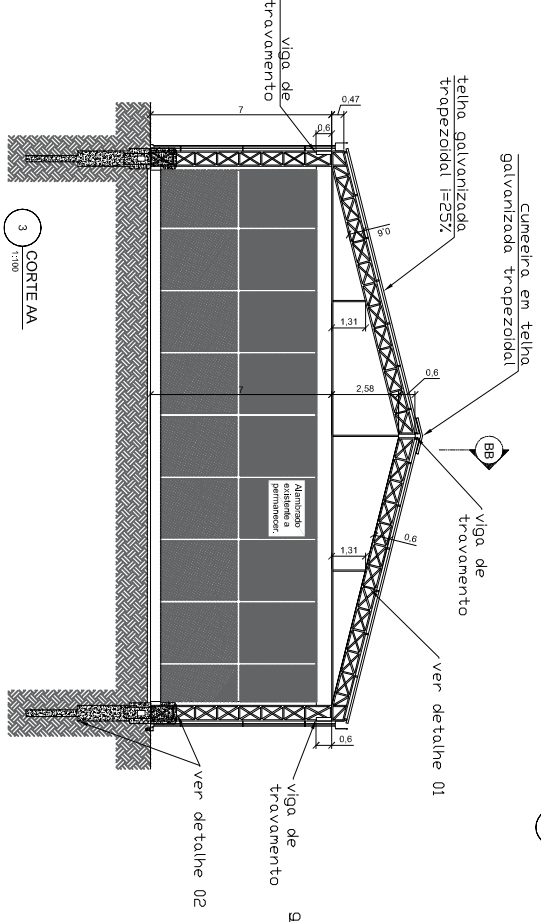
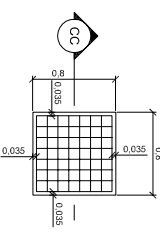


1 DETALHE DA ESTRUTURA
1:200

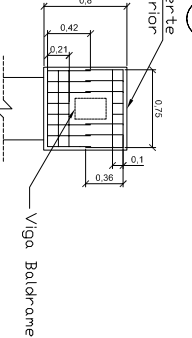
2 PLANTA BAIXA
1:1000



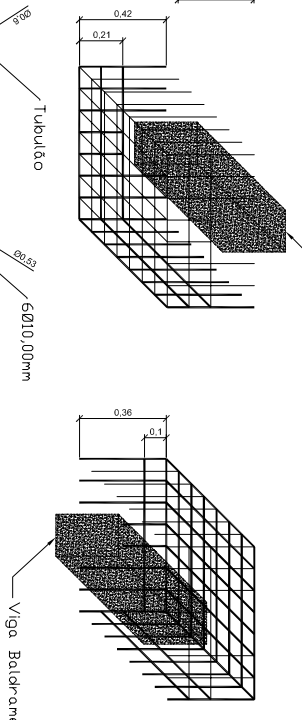
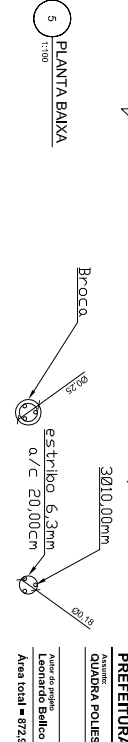
3 CORTE AA
1:1000



4 PLANTA BAIXA - Bloco de Fundações
1:100



5 PLANTA BAIXA
1:100



PROJETO DE COBERTURA DE QUADRA
PREFEITURA MUNICIPAL DE CAMBUI
QUADRA POLIESPORTIVA - BAIRRO DOS LOPES

Escala: _____
Indicadas: _____
Folha: 1/4
Autor do projeto: Danilo - Arquiteto (C.R. 45086/01)
Consultor: Danilo - Arquiteto (C.R. 45086/01)
Área total = 872,96m²